

Cytokeratin 18 Antibody

Datasheet

For Research Use Only

Description	Catalog No.	Size
Cytokeratin 18 Concentrate	FP-A014-01	0.1 ml
Cytokeratin 18 Concentrate	FP-A014-10	1 ml
Cytokeratin 18 Predilute	FP-A014-70	7 ml

Description

Cytokeratin 18 (CK18) is present in simple, glandular, and transitional epithelial cells, but is absent in stratified epithelial cells. CK18 usually multimerizes with Cytokeratin 8, and Anti-Cytokeratin 18 is useful for detecting adenocarcinomas of simple and glandular epithelium origin, as well as poorly differentiated squamous carcinoma cells.

Specifications

Clone	IHC018
Source	Mouse Monoclonal
Applications	IHC (P)
Formulation	Tris Buffer, pH 7.3 - 7.7, with 1% BSA and <0.1% Sodium Azide

IHC Procedure*

Positive Control Tissue	Breast, Breast Carcinoma
Dilution Range	1:50 – 1:200
Pretreatment	Perform heat-induced epitope retrieval (HIER) at pH for 10 to 30 minutes
Incubation Time and Temp	10 to 30 minutes at room temperature
Detection	Refer to the corresponding user manual for detection system

Result

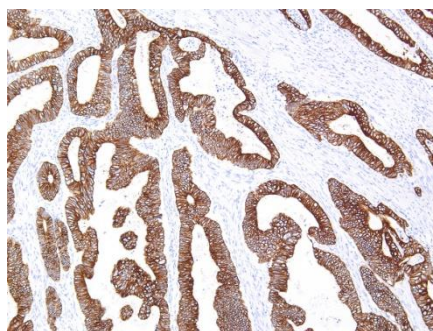


Figure Cytokeratin 18 on Colon



Storage and Handling

Must store the reagent at 2-8 °C. Do not freeze. Do not use the reagent after expiration date on vial. To ensure proper stability and delivery of the antibody after each run, replace the cap and immediately place the bottle in a refrigerator in an upright position. Positive and negative controls should be simultaneously run with unknown specimens, as there are no conclusive characteristics to suggest instability of the antibody.

Precautions

The product is for research use only. Do not use for diagnosis purpose. Ensure proper handling procedures are used with all reagents. Always wear laboratory coats, disposable gloves, and other appropriate laboratory equipment when handling reagents. Do not ingest reagents, and avoid contact with eyes and mucous membranes. Wash eyes with copious amounts of water if contact occurs.

References

1. **Moll R.** “Cytokeratins as markers of differentiation in the diagnosis of epithelial tumors.” *Subcell Biochem.* 1998; 31:205-62.
2. **Ku NO, et al.** “Mutation of human keratin 18 in association with cryptogenic cirrhosis.” *J Clin Invest.* 1997; 99:19-23.
3. **Woelfle U, et al.** “Down-regulated expression of cytokeratin 18 promotes progression of human breast cancer.” *Clin Cancer Res.* 2004; 10:2670-4.

Technical Support

Contact FemtoPath Technical Support at +886232338585 or email to femtopath@hongjing.com.tw for assistance with more questions regarding this product.