

## PAX-5 Antibody

### Datasheet

For Research Use Only

Description	Catalog No.	Size
PAX-5 Concentrate	FP-A034-01	0.1 ml
PAX-5 Concentrate	FP-A034-05	1 ml
PAX-5 Predilute	FP-A034-70	7 ml
PAX-5 Predilute	FP-A034-250	25 ml

### Description

PAX5 is a member of the paired box (PAX) family of transcription factors, which are key regulators in early development. The PAX5 gene encodes the B-cell lineage specific activator protein (BSAP), whose expression is limited to early stages of B-cell differentiation. Anti-PAX5 is useful in differentiating between classic Hodgkin's lymphoma versus multiple myeloma and solitary plasmacytoma, as the protein is expressed in mature and precursor B-cell non-Hodgkin's lymphomas/leukemias while being absent from the other two conditions. Diffuse large B-cell lymphomas are positive for PAX5, with the exception of those with terminal B-cell differentiation, and T-cell neoplasms do not stain with Anti-PAX5.

### Specifications

Clone	IHC005
Source	Mouse Monoclonal
Applications	IHC (P)
Formulation	Tris Buffer, pH 7.3 - 7.7, with 1% BSA and <0.1% Sodium Azide

### IHC Procedure\*

Positive Control Tissue	Tonsil
Concetrated Dilution	1:50 – 1:200
Pretreatment	Perform heat-induced epitope retrieval (HIER) at pH 9 for 10 to 30 minutes
Incubation Time and Temp	10 to 30 minutes at room temperature
Detection	Refer to the detection system manual

\*Result should confirmed by an established diagnostic procedure.

## Result

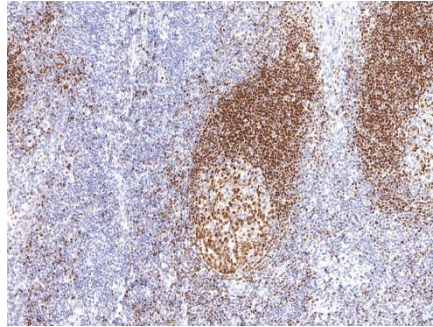


Figure. PAX5 on Tonsil.

## Storage and Handling

Must store the reagent at 2-8 °C. Do not freeze. Do not use the reagent after expiration date on vial. To ensure proper stability and delivery of the antibody after each run, replace the cap and immediately place the bottle in a refrigerator in an upright position. Positive and negative controls should be simultaneously run with unknown specimens, as there are no conclusive characteristics to suggest instability of the antibody.

## Precautions

**The product is for research use only.** Do not use for diagnosis purpose. Ensure proper handling procedures are used with all reagents. Always wear laboratory coats, disposable gloves, and other appropriate laboratory equipment when handling reagents. Do not ingest reagents, and avoid contact with eyes and mucous membranes. Wash eyes with copious amounts of water if contact occurs.

## References

1. **Torlakovic E**, et al. "The value of anti-pax-5 immunostaining in routinely fixed and paraffin-embedded sections: a novel pan pre-B and B-cell marker." *Am J Surg Pathol.* 2002 Oct;26(10):1343-50.
2. **Willenbrock K**, et al. "T-cell variant of classical Hodgkin's lymphoma with nodal and cutaneous manifestations demonstrated by single-cell polymerase chain reaction." *Lab Invest.* 2002 Sep;82(9):1103-9.
3. **Falini B**, et al. "Proteins encoded by genes involved in chromosomal alterations in lymphoma and leukemia: clinical value of their detection by immunocytochemistry." *Blood.* 2002 Jan 15;99(2):409-26.
4. **Schwering I**, et al. "Loss of the B-lineage-specific gene expression program in Hodgkin and Reed-Sternberg cells of Hodgkin lymphoma.. *Blood.* 2003 Feb 15;101(4):1505-12.

## Technical Support

Contact FemtoPath Technical Support at +886232338585 or email to [femtopath@hongjing.com.tw](mailto:femtopath@hongjing.com.tw) for questions regarding this product.