

Tau Antibody

Datasheet

For Research Use Only

| Description | Catalog No. | Size |
|-----------------|-------------|--------|
| Tau Concentrate | FP-A045-01 | 0.1 ml |
| Tau Concentrate | FP-A045-10 | 1 ml |
| Tau Predilute | FP-A045-70 | 7 ml |

Description

Tau proteins are abundant in neurons of the central nervous system, and function in microtubule stability and organization. Defects in Tau functioning and aggregation of these proteins have been clinically linked to a number of neurodegenerative disorders including Alzheimer's disease, Parkinson's disease, Pick's disease (PiD), progressive supranuclear palsy (PSP), cortical basal degeneration (CBD), and frontotemporal dementia with parkinsonism linked to chromosome 17 (FTDP-17).

Specifications

| | |
|--------------|---|
| Clone | IHC696 |
| Source | Mouse Monoclonal |
| Applications | IHC (P) |
| Formulation | Tris Buffer, pH 7.3 - 7.7, with 1% BSA and <0.1% Sodium Azide |

IHC Procedure*

| | |
|--------------------------|--|
| Positive Control Tissue | Thyroid Gland |
| Dilution Range | 1:50 – 1:200 |
| Pretreatment | Perform heat-induced epitope retrieval (HIER) at pH for 10 to 30 minutes |
| Incubation Time and Temp | 10 to 30 minutes at room temperature |
| Detection | Refer to the corresponding user manual for detection system |

*Result should be confirmed by an established diagnostic procedure.

Result

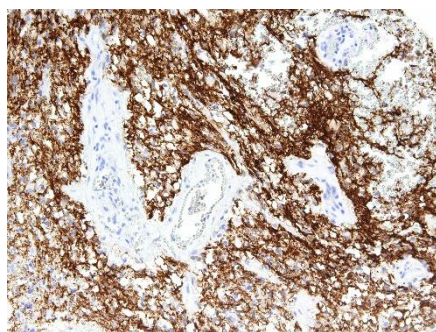


Figure. Tau on Brain Cancer



Storage and Handling

Must store the reagent at 2-8 °C. Do not freeze. Do not use the reagent after expiration date on vial. To ensure proper stability and delivery of the antibody after each run, replace the cap and immediately place the bottle in a refrigerator in an upright position. Positive and negative controls should be simultaneously run with unknown specimens, as there are no conclusive characteristics to suggest instability of the antibody.

Precautions

The product is for research use only. Do not use for diagnosis purpose. Ensure proper handling procedures are used with all reagents. Always wear laboratory coats, disposable gloves, and other appropriate laboratory equipment when handling reagents. Do not ingest reagents, and avoid contact with eyes and mucous membranes. Wash eyes with copious amounts of water if contact occurs.

References

1. **Goedert M**, et al. “Cloning and sequencing of the cDNA encoding a core protein of the paired helical filament of Alzheimer disease: identification as the microtubule-associated protein tau.” Proc Natl Acad Sci U S A. 1988; 85:4051-5.
2. **Shin RW**, et al. “Hydrated autoclave pretreatment enhances tau immunoreactivity in formalin-fixed normal and Alzheimer's disease brain tissues.” Lab Invest. 1991; 64:693-702.

Technical Support

FemtoPath Technical Support at +886232338585 or email to femtopath@hongjing.com.tw for assistance with more questions regarding this product.