

CD45R Antibody

Datasheet

For Research Use Only

Description	Catalog No.	Size
CD45R Concentrate	FP-A008R-01	0.1 ml
CD45R Concentrate	FP-A008R-10	1 ml
CD45R Predilute	FP-A008R-70	7 ml
CD45R Predilute	FP-A008R-250	25 ml

Description

CD45R, also known as MB1, is an isoform of CD45 that is a member of the protein tyrosine phosphatase (PTPase) family. CD45R is expressed specifically on the surface of hematopoietic cells, and has demonstrated function as a regulator of the antigen and cytokine receptor signaling of B- and T-cells. Given that the antigen is located in the membrane of all B-cells, with the exception of plasma cells and some mature T-cells, AntiCD45R exhibits specific reactivity with most B-lymphocytes. The use of Anti-CD45R is primarily useful in distinguishing B-cell lymphomas from T-cell lymphomas, with specific reactivity to follicle center cells, mantle cells, some medullary thymocytes, and 80% of B-cell lymphomas.

Specifications

Clone	IHC045
Source	Mouse Monoclonal
Applications	IHC (P)
Formulation	Tris Buffer, pH 7.3 - 7.7, with 1% BSA and <0.1% Sodium Azide

IHC Procedure*

Positive Control Tissue	Lymph Node, Tonsil
Dilution Range	1:50 – 1:200
Pretreatment	Perform heat-induced epitope retrieval (HIER) at pH for 10 to 30 minutes
Incubation Time and Temp	10 to 30 minutes at room temperature
Detection	Refer to the corresponding user manual for detection system

Result

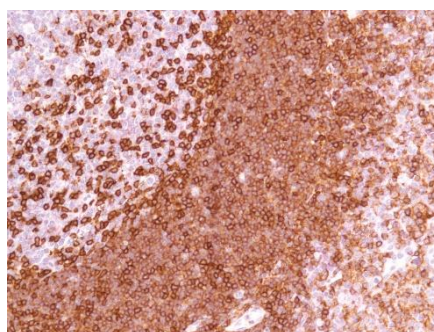


Figure. CD45R on Tonsil



Storage and Handling

Must store the reagent at 2-8 °C. Do not freeze. Do not use the reagent after expiration date on vial. To ensure proper stability and delivery of the antibody after each run, replace the cap and immediately place the bottle in a refrigerator in an upright position. Positive and negative controls should be simultaneously run with unknown specimens, as there are no conclusive characteristics to suggest instability of the antibody.

Precautions

The product is for research use only. Do not use for diagnosis purpose. Ensure proper handling procedures are used with all reagents. Always wear laboratory coats, disposable gloves, and other appropriate laboratory equipment when handling reagents. Do not ingest reagents, and avoid contact with eyes and mucous membranes. Wash eyes with copious amounts of water if contact occurs.

References

1. **Myskow M**, et al. “Paraffin section immunophenotyping of non-Hodgkin's lymphoma, using a panel of monoclonal antibodies.” *Am J Clin Pathol.* 1988; 90:564-74.
2. **Shin S**, et al. “Immunoarchitecture of normal human bone marrow: a study of frozen and fixed tissue sections.” *Hum Pathol.* 1992; 23:686-94.

Technical Support

Contact FemtoPath Technical Support at +886232338585 or email to femtopath@hongjing.com.tw for assistance with more questions regarding this product.