

Actin, Smooth Muscle Antibody

Datasheet

For Research Use Only

Description	Catalog No.	Size
Actin, Smooth Muscle Concentrate	FP-A051-01	0.1 ml
Actin, Smooth Muscle Concentrate	FP-A051-10	1 ml
Actin, Smooth Muscle Predilute	FP-A051-70	7ml
Actin, Smooth Muscle Predilute	FP-A051-250	25ml

Description

Actin is part of the cytoskeletal system of all cell types. Smooth Muscle Actin is found in myofibroblasts and myoepithelium, but not in cardiac or skeletal muscles. Labeling of smooth muscle actin in concert with muscle specific actin staining can allow for differentiation between rhabdomyosarcoma and leiomyosarcoma, as muscle specific actin is found in rhabdomyoblasts, while smooth muscle actin is found in leiomyosarcomas.

Specifications

Clone	IHC506
Source	Mouse Monoclonal
Applications	IHC (P)
Formulation	Tris Buffer, pH 7.3 - 7.7, with 1% BSA and <0.1% Sodium Azide

IHC Procedure*

Positive Control Tissue	Appendix, Uterus, Vessel Wall
Concetrated Dilution	1:50 – 1:200
Pretreatment	Perform heat-induced epitope retrieval (HIER) at pH 9 for 10 to 30 minutes
Incubation Time and Temp	10 to 30 minutes at room temperature
Detection	Refer to the detection system manual

*Result should confirmed by an established diagnostic procedure.

Result

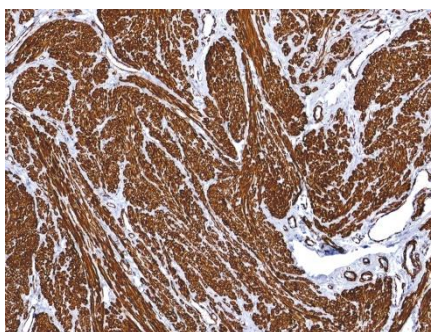


Figure. Actin, Smooth Muscle on Small Intestine.

Storage and Handling

Must store the reagent at 2-8 °C. Do not freeze. Do not use the reagent after expiration date on vial. To ensure proper stability and delivery of the antibody after each run, replace the cap and immediately place the bottle in a refrigerator in an upright position. Positive and negative controls should be simultaneously run with unknown specimens, as there are no conclusive characteristics to suggest instability of the antibody.

Precautions

The product is for research use only. Do not use for diagnosis purpose. Ensure proper handling procedures are used with all reagents. Always wear laboratory coats, disposable gloves, and other appropriate laboratory equipment when handling reagents. Do not ingest reagents, and avoid contact with eyes and mucous membranes. Wash eyes with copious amounts of water if contact occurs.

References

1. **Cooke P.** "A filamentous cytoskeleton in vertebrate smooth muscle fibers." J Cell Biol. 1976 Mar;68(3):539-56.
2. **Gown AM,** et al. "A smooth muscle-specific monoclonal antibody recognizes smooth muscle actin isozymes." J Cell Biol. 1985 Mar;100(3):807-13.
3. **Lazarides E,** et al. "Immunofluorescence studies on the structure of actin filaments in tissue culture cells." J Histochem Cytochem. 1975 Jul;23(7):507-28.

Technical Support

Contact FemtoPath Technical Support at +886232338585 or email to femtopath@hongjing.com.tw for questions regarding this product.