

p40 Antibody

Datasheet

For Research Use Only

Description	Catalog No.	Size
p40 Concentrate	FP-A066-01	0.1 ml
p40 Concentrate	FP-A066-05	1 ml
p40 Predilute	FP-A066-70	7 ml
p40 Predilute	FP-A066-250	25 ml

Description

p40 / ΔNp63 antibody was raised against a p40 specific epitope and can offer more specific detection than traditional p63 antibody in identifying lung squamous cell carcinomas. Although the frequently recommended squamous marker p63 is very sensitive, it suffers from low specificity due to reaction to subset of lung adenocarcinomas and lymphomas. Anti-p40 specially recognizes the N terminal truncated isoform of p63 (ΔNp63) that is demonstrated as more specific for squamous cell and basal cells. p40 and p63 are different in structure and exploit opposite functions. While p63 transactivates p53 and serves as a tumor processor, p40 inactivates p53 and promote the tumor progression. Studies support that Anti-p40 eliminates reaction with lung adenocarcinomas, thus offering higher specificity in lung squamous cell carcinomas.

Specifications

Clone	IHC040
Source	Mouse Monoclonal
Applications	IHC (P)
Formulation	Tris Buffer, pH 7.3 - 7.7, with 1% BSA and <0.1% Sodium Azide

IHC Procedure*

Positive Control Tissue	Squamous Cell Carcinoma of Lung
Concetrated Dilution	1:50 – 1:200
Pretreatment	Perform heat-induced epitope retrieval (HIER) at pH 9 for 10 to 30 minutes
Incubation Time and Temp	10 to 30 minutes at room temperature
Detection	Refer to the detection system manual

*Result should confirmed by an established diagnostic procedure.

Result

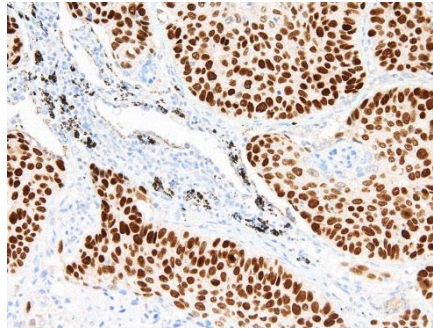


Figure. p40 on Lung Cancer.

Storage and Handling

Must store the reagent at 2-8 °C. Do not freeze. Do not use the reagent after expiration date on vial. To ensure proper stability and delivery of the antibody after each run, replace the cap and immediately place the bottle in a refrigerator in an upright position. Positive and negative controls should be simultaneously run with unknown specimens, as there are no conclusive characteristics to suggest instability of the antibody.

Precautions

The product is for research use only. Do not use for diagnosis purpose. Ensure proper handling procedures are used with all reagents. Always wear laboratory coats, disposable gloves, and other appropriate laboratory equipment when handling reagents. Do not ingest reagents, and avoid contact with eyes and mucous membranes. Wash eyes with copious amounts of water if contact occurs.

References

1. **Bishop JA1, Teruya-Feldstein J, et al.** “p40 (Δ Np63) is superior to p63 for the diagnosis of pulmonary squamous cell carcinoma.” *Mod Pathol.* 2012 Mar;25(3):405-15.
2. **Pelosi G1, Fabbri A, et al.** “ Δ Np63 (p40) and thyroid transcription factor-1 immunoreactivity on small biopsies or cellblocks for typing non-small cell lung cancer: a novel two-hit, sparing-material approach.” *J Thorac Oncol.* 2012 Feb;7(2):281-90.

Technical Support

Contact FemtoPath Technical Support at +886232338585 or email to femtopath@hongjing.com.tw for questions regarding this product.