

## AEG1 Antibody

### Datasheet

For Research Use Only

Description	Catalog No.	Size
AEG1 Concentrate	FP-A072-01	0.1 ml
AEG1 Concentrate	FP-A072-05	1 ml
AEG1 Predilute	FP-A072-70	7 ml
AEG1 Predilute	FP-A072-250	25 ml

### Description

Astrocyte Elevated Gene-1 Protein (AEG1) is an oncoprotein involved in many hallmarks of aggressive cancer progression such as apoptosis evasion, cell movement, transformation, invasion, angiogenesis, metastasis, and drug resistance. AEG1 plays an important role in anchorage-independent growth of cancer cells, which allow for tumour cell expansions. It is also implicated in diverse physiological and pathological processes, such as development, inflammation, neurodegeneration, migraine, and Huntington's disease. AEG1 is found to be overexpressed in melanoma, malignant glioma, and breast cancer, and is associated with poor clinical outcomes in hepatocellular carcinoma. The protein is a potential therapeutic target for reducing metastasis and enhancing chemotherapy.

### Specifications

Clone	IHC507
Source	Mouse Monoclonal
Applications	IHC (P)
Formulation	Tris Buffer, pH 7.3 - 7.7, with 1% BSA and <0.1% Sodium Azide

### IHC Procedure\*

Positive Control Tissue	Glioblastoma
Concetrated Dilution	1:50 – 1:200
Pretreatment	Perform heat-induced epitope retrieval (HIER) at pH 9 for 10 to 30 minutes
Incubation Time and Temp	10 to 30 minutes at room temperature
Detection	Refer to the detection system manual

\*Result should confirmed by an established diagnostic procedure.

### Result

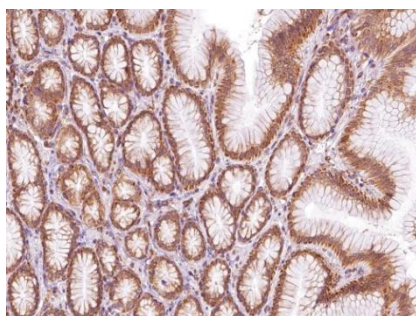


Figure. AEG1 on Stomach Cancer



## Storage and Handling

Must store the reagent at 2-8 °C. Do not freeze. Do not use the reagent after expiration date on vial. To ensure proper stability and delivery of the antibody after each run, replace the cap and immediately place the bottle in a refrigerator in an upright position. Positive and negative controls should be simultaneously run with unknown specimens, as there are no conclusive characteristics to suggest instability of the antibody.

## Precautions

**For research use only.** Do not use for diagnosis purpose.

## References

1. **Brown DM.** “Metadherin, a cell surface protein in breast tumors that mediates lung metastasis.” *Cancer Cell*. 2004 Apr;5(4):365-74.
2. **Yoo BK, et al.** “Astrocyte elevated gene-1 (AEG-1): A multifunctional regulator of normal and abnormal physiology.” *Pharmacol Ther*. 2011 Apr;130(1):1-8.
3. **Yoo BK, et al.** “Astrocyte elevated gene-1 regulates hepatocellular carcinoma development and progression.” *J Clin Invest*. 2009 Mar;119(3):465-77.
4. **Hu G, et al.** “MTDH activation by 8q22 genomic gain promotes chemoresistance and metastasis of poor-prognosis breast cancer.” *Cancer Cell*. 2009 Jan 6;15(1):9-20.

## Technical Support

Contact FemtoPath Technical Support at +886232338585 or email to [femtopath@hongjing.com.tw](mailto:femtopath@hongjing.com.tw) for questions regarding this product.