

## PAX-8 Antibody

### Datasheet

For Research Use Only

Description	Catalog No.	Size
PAX-5 Concentrate	FP-A035-01	0.1 ml
PAX-5 Concentrate	FP-A035-05	1 ml
PAX-5 Predilute	FP-A035-70	7 ml
PAX-5 Predilute	FP-A035-250	25 ml

### Description

PAX8 is expressed in simple ovarian inclusion cysts and non-ciliated mucosal cells of the fallopian tubes, but is absent from normal ovarian surface epithelial cells. Mutations in the PAX8 gene are linked to thyroid follicular carcinomas, atypical thyroid adenomas, and thyroid dysgenesis. Reports have associated PAX8 expression with renal carcinoma, nephroblastoma, and seminoma, and have indicated PAX8 as a useful marker for renal epithelial tumours, ovarian cancer, and for differential diagnoses in lung and neck tumours. Anti-PAX8 can be useful in determining the primary site of invasive micropapillary carcinomas of ovary from bladder, lung, and breast, when used in adjunct with a panel of organ-specific markers such as uroplakin, mammaglobin, and TTF-1.

### Specifications

Clone	IHC008
Source	Mouse Monoclonal
Applications	IHC (P)
Formulation	Tris Buffer, pH 7.3 - 7.7, with 1% BSA and <0.1% Sodium Azide

### IHC Procedure\*

Positive Control Tissue	Ovarian Carcinoma (Non-Mucinous Carcinoma), Thyroid Carcinoma, Renal Cell Carcinoma
Concetrated Dilution	1:50 – 1:200
Pretreatment	Perform heat-induced epitope retrieval (HIER) at pH 9 for 10 to 30 minutes
Incubation Time and Temp	10 to 30 minutes at room temperature
Detection	Refer to the detection system manual

\*Result should confirmed by an established diagnostic procedure.

## Result

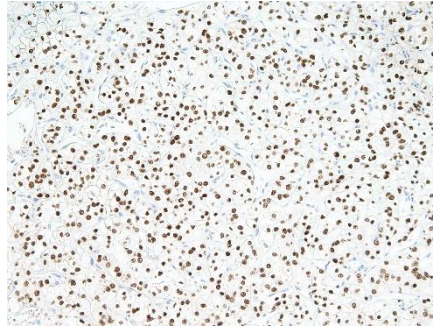


Figure. PAX8 on kidney.

## Storage and Handling

Must store the reagent at 2-8 °C. Do not freeze. Do not use the reagent after expiration date on vial. To ensure proper stability and delivery of the antibody after each run, replace the cap and immediately place the bottle in a refrigerator in an upright position. Positive and negative controls should be simultaneously run with unknown specimens, as there are no conclusive characteristics to suggest instability of the antibody.

## Precautions

**The product is for research use only.** Do not use for diagnosis purpose. Ensure proper handling procedures are used with all reagents. Always wear laboratory coats, disposable gloves, and other appropriate laboratory equipment when handling reagents. Do not ingest reagents, and avoid contact with eyes and mucous membranes. Wash eyes with copious amounts of water if contact occurs.

## References

1. **Tong GX**, et al. "Expression of PAX8 in normal and neoplastic renal tissues: an immunohistochemical study." *Mod Pathol*. 2009 Sep;22(9):1218-27.
2. **Nonaka D**, et al. "Diagnostic utility of thyroid transcription factors Pax8 and TTF-2 (FoxE1) in thyroid epithelial neoplasms." *Am J Surg Pathol*. 2009 Jul;33(7):1037-41.
3. **Lotan TL**, et al. "Immunohistochemical panel to identify the primary site of invasive micropapillary carcinoma." *Blood*. 2002 Jan 15;99(2):409-26.
4. **Nikiforova MN**, et al. "PAX8-PPARgamma rearrangement in thyroid tumors: RT-PCR and immunohistochemical analyses." *Am J Surg Pathol*. 2002 Aug;26(8):1016-23.
5. **Nonaka D, et al.** "Expression of pax8 as a useful marker in distinguishing ovarian carcinomas from mammary carcinomas." *Am J Surg Pathol*. 2008; 32:1566-71.
6. **Marques AR, et al.** "Expression of PAX8-PPAR gamma 1 rearrangements in both follicular thyroid carcinomas and adenomas." *J Clin Endocrinol Metab*. 2002; 87:3947-52.
7. **Tina DP, et al.** "The paired domain-containing factor Pax8 and the homeodomain-containing factor TTF-1 directly interact and synergistically activate transcription." *J Biol Chem*. 2003; 278:3395-3402.



8. **Bowen NJ, et al.** “Emerging roles for PAX8 in ovarian cancer and endosalpingeal development.” *Gynecol Oncol.* 2007; 104:331-7.
9. **Zhang P, et al.** “Immunohistochemical analysis of thyroid-specific transcription factors in thyroid tumors.” *Pathol Int.* 2006; 56:240-245.

## **Technical Support**

Contact FemtoPath Technical Support at +886232338585 or email to [femtopath@hongjing.com.tw](mailto:femtopath@hongjing.com.tw) for questions regarding this product.