

SALL4 Antibody

Datasheet

For Research Use Only

Description	Catalog No.	Size
SALL4 Concentrate	FP-A042-01	0.1 ml
SALL4 Concentrate	FP-A042-10	1 ml
SALL4 Predilute	FP-A042-70	7 ml

Description

Sal-Like Protein 4 (SALL4), is a zinc finger transcription factor found in germ cells and human blood progenitor cells, with functional involvement in modulating Oct-4 to maintain embryonic stem cell pluripotency. SALL4 is a useful marker for acute myeloid leukemia, B-cell acute lymphocytic leukemia, intratubular germ cell neoplasia, seminomas/dysgerminomas, and yolk sac tumors (both pediatric and postpubertal). Anti-SALL4 is used to detect embryonal carcinomas, hepatocellular carcinoma (HCC), gliomas, ovarian primitive germ-cell tumors, choriocarcinomas, spermatogonia, teratoma, gastric cancer, breast cancer, and lung cancer. Expression of SALL4 is often associated with poor prognosis in HCC, and with metastasis in endometrial cancer, colorectal carcinoma, and esophageal squamous cell carcinoma.

Specifications

Clone	IHC659
Source	Mouse Monoclonal
Applications	IHC (P)
Formulation	Tris Buffer, pH 7.3 - 7.7, with 1% BSA and <0.1% Sodium Azide

IHC Procedure*

Positive Control Tissue	Seminoma, Dysgerminoma
Dilution Range	1:50 – 1:200
Pretreatment	Perform heat-induced epitope retrieval (HIER) at pH for 10 to 30 minutes
Incubation Time and Temp	10 to 30 minutes at room temperature
Detection	Refer to the corresponding user manual for detection system

Result

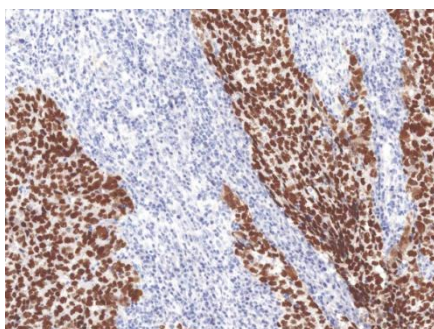


Figure SALL4 on Testicular Cancer

Storage and Handling

Must store the reagent at 2-8 °C. Do not freeze. Do not use the reagent after expiration date on vial. To ensure proper stability and delivery of the antibody after each run, replace the cap and immediately place the bottle in a refrigerator in an upright position. Positive and negative controls should be simultaneously run with unknown specimens, as there are no conclusive characteristics to suggest instability of the antibody.

Precautions

The product is for research use only. Do not use for diagnosis purpose. Ensure proper handling procedures are used with all reagents. Always wear laboratory coats, disposable gloves, and other appropriate laboratory equipment when handling reagents. Do not ingest reagents, and avoid contact with eyes and mucous membranes. Wash eyes with copious amounts of water if contact occurs.

References

1. **Ma Y**, et al. “SALL4, a novel oncogene, is constitutively expressed in human acute myeloid leukemia (AML) and induces AML in transgenic mice.” *Blood*. 2006; 108:2726-35.
2. **de Celis JF**, et al. “Regulation and function of Spalt proteins during animal development.” *Int J Dev Biol*. 2009; 53:1385–98.
3. **Kohlhase J**, et al. “SALL4 mutations in Okihiro syndrome (Duane-radial ray syndrome), acro-renal-ocular syndrome, and related disorders.” *Hum Mutat*. 2005; 26:176–83.
4. **Miettinen M**, et al. “SALL4 expression in germ cell and non-germ cell tumors: a systematic immunohistochemical study of 3215 cases.” *J Surg Pathol*. 2014; 38:410–20.
5. **Zhang X**, et al. “SALL4: an emerging cancer biomarker and target.” *Cancer Lett*. 2015; 357:55–62.
6. **Ueno S**, et al. “Aberrant expression of SALL4 in acute B cell lymphoblastic leukemia: mechanism, function, and implication for a potential novel therapeutic target.” *Exp Hematol*. 2014; 42:307–16.
7. **Cao D**, et al. “SALL4 is a novel diagnostic marker for testicular germ cell tumors.” *Am J Surg Pathol*. 2009; 33:1065–77.
8. **Zhang L**, et al. “SALL4, a novel marker for human gastric carcinogenesis and metastasis.” *Oncogene*. 2014; 33:5491–500.
9. **Kobayashi D**, et al. “SALL4 is essential for cancer cell proliferation and is overexpressed at early clinical stages in breast cancer.” *Int J Oncol*. 2011; 38:933–9.
10. **Cui W**, et al. “Differential expression of the novel oncogene, SALL4, in lymphoma, plasma cell myeloma, and acute lymphoblastic leukemia.” *Mod Pathol*. 2006; 19:1585-92.

Technical Support

Contact FemtoPath Technical Support at +886232338585 or email to femtopath@hongjing.com.tw for assistance with more questions regarding this product.