

TAG-72 Antibody

Datasheet

For Research Use Only

Description	Catalog No.	Size
TAG-72 Concentrate	FP-A044-01	0.1 ml
TAG-72 Concentrate	FP-A044-10	1 ml
TAG-72 Predilute	FP-A044-70	7 ml

Description

Tumor-Associated Glycoprotein 72 (TAG-72) is a glycoprotein found on the surface of many cancer pathologies. Anti-TAG-72 can be useful for detecting some adenocarcinomas and non-neoplastic tissues. This diagnostic grade TAG-72 IVD antibody is useful for identifying adenocarcinomas in positive staining, but in mesotheliomas no staining is observed.

Specifications

Clone	IHC072
Source	Mouse Monoclonal
Applications	IHC (P)
Formulation	Tris Buffer, pH 7.3 - 7.7, with 1% BSA and <0.1% Sodium Azide

IHC Procedure*

Positive Control Tissue	Lung Adenocarcinoma
Dilution Range	1:50 – 1:200
Pretreatment	Perform heat-induced epitope retrieval (HIER) at pH for 10 to 30 minutes
Incubation Time and Temp	10 to 30 minutes at room temperature
Detection	Refer to the corresponding user manual for detection system

*Result should be confirmed by an established diagnostic procedure.

Result

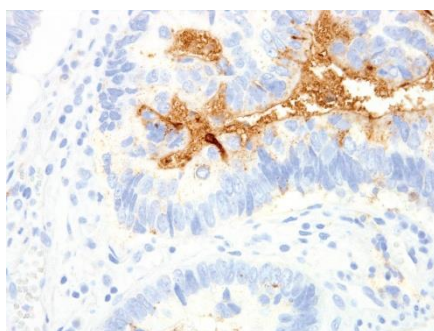


Figure TAG-72 on Colon

Storage and Handling

Must store the reagent at 2-8 °C. Do not freeze. Do not use the reagent after expiration date on vial. To ensure proper stability and delivery of the antibody after each run, replace the cap and immediately place the bottle in a refrigerator in an upright position. Positive and negative controls should be simultaneously run with unknown specimens, as there are no conclusive characteristics to suggest instability of the antibody.

Precautions

The product is for research use only. Do not use for diagnosis purpose. Ensure proper handling procedures are used with all reagents. Always wear laboratory coats, disposable gloves, and other appropriate laboratory equipment when handling reagents. Do not ingest reagents, and avoid contact with eyes and mucous membranes. Wash eyes with copious amounts of water if contact occurs.

References

1. Thor A, et al. "Distribution of oncofetal antigen tumor-associated glycoprotein-72 defined by monoclonal antibody B72.3." *Cancer Res.* 1986; 46:3118-24.
2. Osteen KG, et al. "Distribution of tumor-associated glycoprotein-72 (TAG-72) expression throughout the normal female reproductive tract." In *J Gynecol Pathol.* 1992; 11:216-20.
3. Johnston WW, et al. "Use of a monoclonal antibody (B72.3) as a novel immunohistochemical adjunct for the diagnosis of carcinomas in fine needle aspiration biopsy specimens." *Hum Pathol.* 1986; 17:501-13.
4. Lundy J, et al. "Monoclonal antibody B72.3 as a diagnostic adjunct in fine needle aspirates of breast masses." *Ann Surg.* 1986; 203:399-402.
5. Kline TS, et al. "Monoclonal antibody B72.3. An adjunct for evaluation of suspicious aspiration biopsy cytology from the breast." *Cancer.* 1989; 63:2253-6.
6. Chieng DC, et al. "Expression of CEA, Tag-72, and Lewis-Y antigen in primary and metastatic lesions of ovarian carcinoma." *Hum Pathol.* 2003; 34:1016-21.
7. Ordóñez NG. "Role of immunohistochemistry in distinguishing epithelial peritoneal mesotheliomas from peritoneal and ovarian serous carcinomas." *Am J Surg Pathol.* 1998; 22:1203-14.
8. Ordóñez NG1. "The immunohistochemical diagnosis of mesothelioma: a comparative study of epithelioid mesothelioma and lung adenocarcinoma." *Am J Surg Pathol.* 2003; 27:1031-51.

Technical Support

Contact FemtoPath Technical Support at +886232338585 or email to femtopath@hongjing.com.tw for assistance with more questions regarding this product.