

TFE3 Antibody

Datasheet

For Research Use Only

Description	Catalog No.	Size
TFE3 Concentrate	FP-A046-01	0.1 ml
TFE3 Concentrate	FP-A046-10	1 ml
TFE3 Predilute	FP-A046-70	7 ml

Description

Transcription Factor E3 (TFE3) is a transcription factor that binds to the MUE3-type E-box sequences involved in TGF- β signalling. Anti-TFE3 staining is the most sensitive and specific indicator of Xp11 translocation renal cell carcinomas. Since alveolar soft part sarcoma (ASPS) is characterized by a specific chromosomal rearrangement resulting in a chimeric transcription factor (ASPS-SCR1-TFE3), this TFE3 IVD antibody is also a useful diagnostic tool for recognizing ASPS.

Specifications

Clone	IHC672
Source	Mouse Monoclonal
Applications	IHC (P)
Formulation	Tris Buffer, pH 7.3 - 7.7, with 1% BSA and <0.1% Sodium Azide

IHC Procedure*

Positive Control Tissue	Testes, Melanoma, Xp11.2 Translocation Renal Cell Carcinoma
Dilution Range	1:50 – 1:200
Pretreatment	Perform heat-induced epitope retrieval (HIER) at pH for 10 to 30 minutes
Incubation Time and Temp	10 to 30 minutes at room temperature
Detection	Refer to the corresponding user manual for detection system

*Result should be confirmed by an established diagnostic procedure.

Result

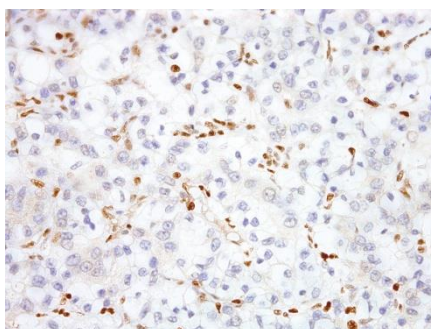


Figure TFE3 on Kidney



Storage and Handling

Must store the reagent at 2-8 °C. Do not freeze. Do not use the reagent after expiration date on vial. To ensure proper stability and delivery of the antibody after each run, replace the cap and immediately place the bottle in a refrigerator in an upright position. Positive and negative controls should be simultaneously run with unknown specimens, as there are no conclusive characteristics to suggest instability of the antibody.

Precautions

The product is for research use only. Do not use for diagnosis purpose. Ensure proper handling procedures are used with all reagents. Always wear laboratory coats, disposable gloves, and other appropriate laboratory equipment when handling reagents. Do not ingest reagents, and avoid contact with eyes and mucous membranes. Wash eyes with copious amounts of water if contact occurs.

References

1. **Argani P**, et al. “The evolving story of renal translocation carcinomas.” *Am J Clin Pathol.* 2006; 126:332-4.
2. **Argani P**, et al. “Aberrant nuclear immunoreactivity for TFE3 in neoplasms with TFE3 gene fusions: a sensitive and specific immunohistochemical assay.” *Am J Surg Pathol.* 2003; 27:750-61.
3. **Lazar AJ**, et al. “Validation of potential therapeutic targets in alveolar soft part sarcoma: an immunohistochemical study utilizing tissue microarray.” *Histopathology.* 2009; 55:750-5.

Technical Support

Contact FemtoPath Technical Support at +886232338585 or email to femtopath@hongjing.com.tw for assistance with more questions regarding this product.