

Vimentin Antibody

Datasheet

For Research Use Only

Description	Catalog No.	Size
Vimentin Concentrate	FP-A050-01	0.1 ml
Vimentin Concentrate	FP-A050-10	1 ml
Vimentin Predilute	FP-A050-70	7 ml
Vimentin Predilute	FP-A050-250	25 ml

Description

Vimentin is a component of intermediate filament in mesenchymal cells, such as endothelial cells, fibroblasts, lymphocytes, and melanocytes. Anti-Vimentin is useful for assessing whether tissue samples have been processed and preserved properly. A panel of Anti-Vimentin and Anti-Keratin is useful for differentiating melanomas from large cell lymphomas and undifferentiated carcinomas. This diagnostic grade Vimentin IVD antibody stains melanomas and schwannomas, as well as Endometrial endometrioid adenocarcinomas.

Specifications

Clone	IHC684
Source	Mouse Monoclonal
Applications	IHC (P)
Formulation	Tris Buffer, pH 7.3 - 7.7, with 1% BSA and <0.1% Sodium Azide

IHC Procedure*

Positive Control Tissue	Tonsil, Lymph Node
Dilution Range	1:50 – 1:200
Pretreatment	Perform heat-induced epitope retrieval (HIER) at pH for 10 to 30 minutes
Incubation Time and Temp	10 to 30 minutes at room temperature
Detection	Refer to the corresponding user manual for detection system

*Result should confirmed by an established diagnostic procedure.

Result

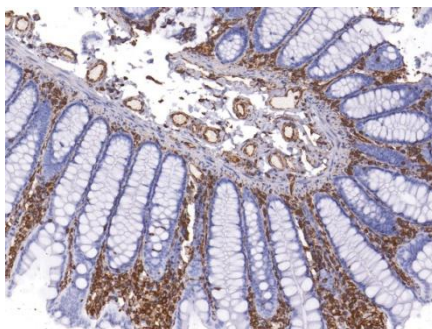


Figure Vimentin on Colon



Storage and Handling

Must store the reagent at 2-8 °C. Do not freeze. Do not use the reagent after expiration date on vial. To ensure proper stability and delivery of the antibody after each run, replace the cap and immediately place the bottle in a refrigerator in an upright position. Positive and negative controls should be simultaneously run with unknown specimens, as there are no conclusive characteristics to suggest instability of the antibody.

Precautions

The product is for research use only. Do not use for diagnosis purpose. Ensure proper handling procedures are used with all reagents. Always wear laboratory coats, disposable gloves, and other appropriate laboratory equipment when handling reagents. Do not ingest reagents, and avoid contact with eyes and mucous membranes. Wash eyes with copious amounts of water if contact occurs.

References

1. Dabbs DJ, et al. Hum Pathol. 1996; 27:172-7.
2. Dabbs DJ, et al. Am J Surg Pathol. 1986; 10:568-76.
3. Yaziji H, et al. Int J Gynecol Pathol. 2001; 20:64-78.

Technical Support

Contact FemtoPath Technical Support at +886232338585 or email to femtopath@hongjing.com.tw for assistance with more questions regarding this product.