

CA 19-9 Antibody

Datasheet

For Research Use Only

Description	Catalog No.	Size
CA 19-9 Concentrate	FP-A074-01	0.1 ml
CA 19-9 Concentrate	FP-A074-05	1 ml
CA 19-9 Predilute	FP-A074-70	7 ml
CA 19-9 Predilute	FP-A074-250	25 ml

Description

CA 19-9 is a secreted protein that is implicated in various cancers. It is overexpressed in salivary gland mucoepidermoid carcinomas and gastric, pancreatic, and colonic (gastrointestinal) adenocarcinomas, but is not expressed in breast, kidney, and prostate carcinomas. CA 19-9 staining is also implicated in Mirizzi's Syndrome or other bile duct and liver diseases.

Specifications

Clone	IHC199
Source	Mouse Monoclonal
Applications	IHC (P)
Formulation	Tris Buffer, pH 7.3 - 7.7, with 1% BSA and <0.1% Sodium Azide

IHC Procedure*

Positive Control Tissue	Breast Carcinoma
Concetrated Dilution	1:50 – 1:200
Pretreatment	Perform heat-induced epitope retrieval (HIER) at pH 9 for 10 to 30 minutes
Incubation Time and Temp	10 to 30 minutes at room temperature
Detection	Refer to the detection system manual

*Result should confirmed by an established diagnostic procedure.

Result

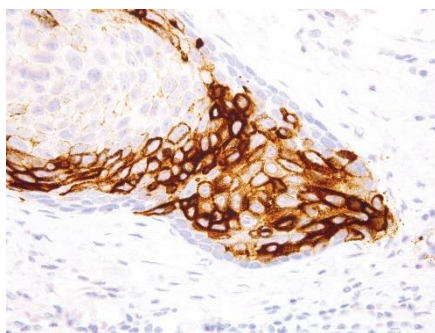


Figure. CA 19-9 on Esophagus



Storage and Handling

Must store the reagent at 2-8 °C. Do not freeze. Do not use the reagent after expiration date on vial. To ensure proper stability and delivery of the antibody after each run, replace the cap and immediately place the bottle in a refrigerator in an upright position. Positive and negative controls should be simultaneously run with unknown specimens, as there are no conclusive characteristics to suggest instability of the antibody.

Precautions

For research use only. Do not use for diagnosis purpose.

References

1. **Gatalica Z.** “Hyaline globules in renal cell carcinomas and oncocytomas.” *Hum Pathol.* 1997 Apr;28(4):400-3.
2. **Encabo G,** et al. “Serum CA 19.9 levels in patients with non tumoral pathologies. Our experience in 892 cases.” *Bull Cancer.* 1986;73(3):256-9.
3. **Tabuchi Y,** et al. “Immunohistochemical studies on the main entrance-route of CA19-9 into the peripheral venous blood of gastric cancer patients. Correlation with CA19-9 levels in peripheral and portal blood.” *Cancer.* 1990 Oct 1;66(7):1529-33.

Technical Support

Contact FemtoPath Technical Support at +886232338585 or email to femtopath@hongjing.com.tw for questions regarding this product.