

Clusterin/Apolipoprotein J Antibody

Datasheet

For Research Use Only

Description	Catalog No.	Size
Clusterin/Apolipoprotein J Concentrate	FP-A076-01	0.1 ml
Clusterin/Apolipoprotein J Concentrate	FP-A076-05	1 ml
Clusterin/Apolipoprotein J Predilute	FP-A076-70	7 ml

Description

Clusterin/Apolipoprotein J is normally found in epithelial cells, semen, plasma, breast milk, cerebrospinal fluid, and urine, and is involved in apoptosis and the clearance of cellular debris. It is present in hematopoietic and non-hematopoietic cancers, as well as most systemic anaplastic large cell lymphomas. Anti-Clusterin/ Apolipoprotein J in a panel with other antibodies is useful for differentiating systemic anaplastic large cell lymphoma from classic Hodgkin's disease. Anti-Clusterin/Apolipoprotein J also displays high sensitivity and specificity for follicular dendritic cell tumours. Clusterin overexpression is linked to recurrence and poor prognosis in breast cancer, and chemosensitivity and poor survival in cervical cancer.

Specifications

Clone	IHC546
Source	Mouse Monoclonal
Applications	IHC (P)
Formulation	Tris Buffer, pH 7.3 - 7.7, with 1% BSA and <0.1% Sodium Azide

IHC Procedure*

Positive Control Tissue	Tonsil, Lymph Node, Placenta, Colon, Kidney, Brain and Liver
Concetrated Dilution	1:50 – 1:200
Pretreatment	Perform heat-induced epitope retrieval (HIER) at pH 9 for 10 to 30 minutes
Incubation Time and Temp	10 to 30 minutes at room temperature
Detection	Refer to the detection system manual

*Result should confirmed by an established diagnostic procedure.

Result

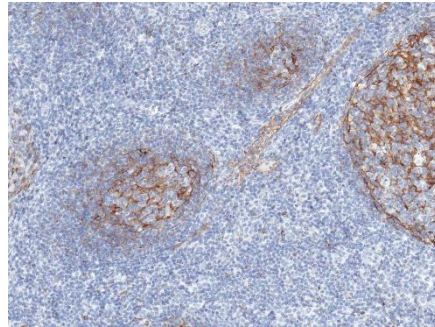


Figure. Clusterin/Apolipoprotein J on Tonsil

Storage and Handling

Must store the reagent at 2-8 °C. Do not freeze. Do not use the reagent after expiration date on vial. To ensure proper stability and delivery of the antibody after each run, replace the cap and immediately place the bottle in a refrigerator in an upright position. Positive and negative controls should be simultaneously run with unknown specimens, as there are no conclusive characteristics to suggest instability of the antibody.

Precautions

The product is for research use only. Do not use for diagnosis purpose. Ensure proper handling procedures are used with all reagents. Always wear laboratory coats, disposable gloves, and other appropriate laboratory equipment when handling reagents. Do not ingest reagents, and avoid contact with eyes and mucous membranes. Wash eyes with copious amounts of water if contact occurs.

References

1. Lin CC, et al. "Apolipoprotein J, a glucose-upregulated molecular chaperone, stabilizes core and NS5A to promote infectious hepatitis C virus virion production." *J Hepatol.* 2014 Nov;61(5):984-93.
2. Fu Y, et al. "Overexpression of clusterin promotes angiogenesis via the vascular endothelial growth factor in primary ovarian cancer." *Mol Med Rep.* 2013 Jun;7(6):1726-32.
3. Shannan B, et al. "Challenge and promise: roles for clusterin in pathogenesis, progression and therapy of cancer." *Cell Death Differ.* 2006 Jan;13(1):12-9.
4. Koltai T. "Clusterin: a key player in cancer chemoresistance and its inhibition." *Onco Targets Ther.* 2014 Mar 20;7:447-56
5. Lae ME, et al. "Clusterin is widely expressed in systemic anaplastic large cell lymphoma but fails to differentiate primary from secondary cutaneous anaplastic large cell lymphoma." *Am J Clin Pathol.* 2002 Nov;118(5):773-9.

Technical Support

Contact FemtoPath Technical Support at +886232338585 or email to femtopath@hongjing.com.tw for questions regarding this product.