

# Estrogen Receptor Antibody

## Datasheet

For Research Use Only

Description	Catalog No.	Size
Estrogen Receptor Concentrate	FP-A081-01	0.1 ml
Estrogen Receptor Concentrate	FP-A081-10	1 ml
Estrogen Receptor Predilute	FP-A081-70	7 ml
Estrogen Receptor Predilute	FP-A081-250	25 ml

### Description

Estrogen Receptors (ER) are a group of nuclear hormone receptors activated by the hormone estrogen. ER is found in normal epithelial cells of the breast and endometrium, as well as in breast cancer cells.

### Specifications

Clone	IHC403
Source	Mouse Monoclonal
Applications	IHC (P)
Formulation	Tris Buffer, pH 7.3 - 7.7, with 1% BSA and <0.1% Sodium Azide

### IHC Procedure\*

Positive Control Tissue	Breast Carcinoma
Concetrated Dilution	1:50 – 1:200
Pretreatment	Perform heat-induced epitope retrieval (HIER) at pH 9 for 10 to 30 minutes
Incubation Time and Temp	10 to 30 minutes at room temperature
Detection	Refer to the detection system manual

\*Result should confirmed by an established diagnostic procedure.

### Result

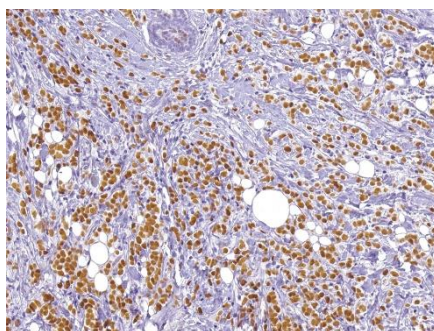


Figure. Estrogen Receptor on on Breast Cancer



## Storage and Handling

Must store the reagent at 2-8 °C. Do not freeze. Do not use the reagent after expiration date on vial. To ensure proper stability and delivery of the antibody after each run, replace the cap and immediately place the bottle in a refrigerator in an upright position. Positive and negative controls should be simultaneously run with unknown specimens, as there are no conclusive characteristics to suggest instability of the antibody.

## Precautions

**The product is for research use only.** Do not use for diagnosis purpose. Ensure proper handling procedures are used with all reagents. Always wear laboratory coats, disposable gloves, and other appropriate laboratory equipment when handling reagents. Do not ingest reagents, and avoid contact with eyes and mucous membranes. Wash eyes with copious amounts of water if contact occurs.

## References

1. **Dahlman-Wright K**, et al. "International Union of Pharmacology. LXIV. Estrogen receptors." *Pharmacol Rev.* 2006 Dec;58(4):773-81.
2. **Levin ER**. "Integration of the extranuclear and nuclear actions of estrogen." *Mol Endocrinol.* 2005 Aug;19(8):1951-9. Epub 2005 Feb 10.
3. **Harris HA**, et al. "Evaluation of an estrogen receptor-beta agonist in animal models of human disease." *Endocrinology.* 2003 Oct;144(10):4241-9.

## Technical Support

Contact FemtoPath Technical Support at +886232338585 or email to [femtopath@hongjing.com.tw](mailto:femtopath@hongjing.com.tw) for questions regarding this product.