

# MART-1 (Melan A) Antibody

## Datasheet

For Research Use Only

Description	Catalog No.	Size
MART-1 (Melan A) Concentrate	FP-A083-01	0.1 ml
MART-1 (Melan A) Concentrate	FP-A083-10	1 ml
MART-1 (Melan A) Predilute	FP-A083-70	7 ml
MART-1 (Melan A) Predilute	FP-A083-250	25 ml

### Description

MART-1, also known as Melan A or Melanoma Antigen Recognized by T-Cells 1, is a protein antigen found specifically on melanocytes of normal skin, retina, and nevi, and not in other normal tissues. Anti-MART-1 is therefore useful as a marker for melanocytic tumours, and as an aid in establishing the diagnosis of metastatic melanomas.

### Specifications

Clone	IHC408
Source	Mouse Monoclonal
Applications	IHC (P)
Formulation	Tris Buffer, pH 7.3 - 7.7, with 1% BSA and <0.1% Sodium Azide

### IHC Procedure\*

Positive Control Tissue	Melanoma, Skin
Dilution Range	1:50– 1:200
Pretreatment	Perform heat-induced epitope retrieval (HIER) at pH for 10 to 30 minutes
Incubation Time and Temp	10 to 30 minutes at room temperature
Detection	Refer to the corresponding user manual for detection system

### Result

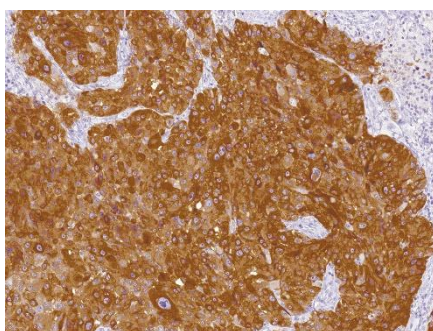


Figure. MART-1 (Melan A) on Melanoma

## Storage and Handling

Must store the reagent at 2-8 °C. Do not freeze. Do not use the reagent after expiration date on vial. To ensure proper stability and delivery of the antibody after each run, replace the cap and immediately place the bottle in a refrigerator in an upright position. Positive and negative controls should be simultaneously run with unknown specimens, as there are no conclusive characteristics to suggest instability of the antibody.

## Precautions

**The product is for research use only.** Do not use for diagnosis purpose. Ensure proper handling procedures are used with all reagents. Always wear laboratory coats, disposable gloves, and other appropriate laboratory equipment when handling reagents. Do not ingest reagents, and avoid contact with eyes and mucous membranes. Wash eyes with copious amounts of water if contact occurs.

## References

1. **Kageshita T**, et al. “Differential expression of MART-1 in primary and metastatic melanoma lesions.” *Arch Pathol Lab Med. J Immunother.* 1997 Nov;20(6):460-5.
2. **Orchard GE**. “Melan A (MART-1): a new monoclonal antibody for malignant melanoma diagnosis.” *Br J Biomed Sci.* 1998 Mar;55(1):8-9.
3. **Blessing K**, et al. “Comparison of immunohistochemical staining of the novel antibody melan-A with S100 protein and HMB-45 in malignant melanoma and melanoma variants.” *Histopathology.* 1998; 32:139-46.
4. **Fetsch PA**, et al. “Melanoma-associated antigen recognized by T cells (MART-1): the advent of a preferred immunocytochemical antibody for the diagnosis of metastatic malignant melanoma with fine-needle aspiration.” *Cancer.* 1999 Feb 25;87(1):37-42.
5. **Orosz Z** et al. “Effusion cytology of malignant melanoma. A morphologic and immunocytochemical analysis including application of the MART-1 antibody.” *Cancer.* 1997; 81:57-63.
6. **Bergman R**, et al. “A comparative immunohistochemical study of MART-1 expression in Spitz nevi, ordinary melanocytic nevi, and malignant melanomas.” *J Am Acad Dermatol.* 2000 Mar;42(3):496-500.

## Technical Support

Contact FemtoPath Technical Support at +886232338585 or email to [femtopath@hongjing.com.tw](mailto:femtopath@hongjing.com.tw) for assistance with more questions regarding this product.