

P27 Antibody

Datasheet

For Research Use Only

Description	Catalog No.	Size
P27 Concentrate	FP-A109-01	0.1 ml
P27 Concentrate	FP-A109-10	1 ml
P27 Concentrate	FP-A109-70	7 ml

Description

p27, also known as p27Kip1, is a cyclin-dependent kinase inhibitor that binds to and inhibits cyclin-dependent kinases, thereby regulating progression from G1 to S phase. Decreased expression of p27 is linked to poor prognosis in renal-cell carcinoma, colon carcinoma, small breast carcinomas, non-small-cell lung carcinoma, hepatocellular carcinoma, multiple myeloma, lymph node metastases in papillary carcinoma of the thyroid, and is associated with a more aggressive phenotype of carcinoma in the cervix.

Specifications

Clone	IHC 027
Source	Mouse Monoclonal
Applications	IHC (P)
Formulation	Tris Buffer, pH 7.3 - 7.7, with 1% BSA and <0.1% Sodium Azide

IHC Procedure*

Positive Control Tissue	Tonsil
Concetrated Dilution	1:50 – 1:200
Pretreatment	Perform heat-induced epitope retrieval (HIER) at pH 9 for 10 to 30 minutes
Incubation Time and Temp	10 to 30 minutes at room temperature
Detection	Refer to the detection system manual

*Result should confirmed by an established diagnostic procedure.

Result

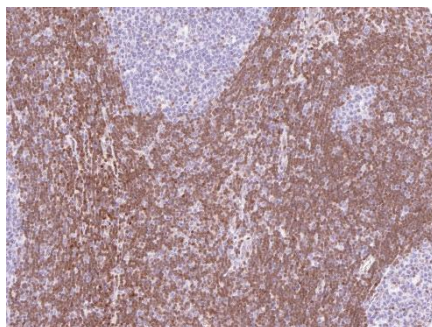


Figure. P27 on Lymph Node.

Storage and Handling

Must store the reagent at 2-8 °C. Do not freeze. Do not use the reagent after expiration date on vial. To ensure proper stability and delivery of the antibody after each run, replace the cap and immediately place the bottle in a refrigerator in an upright position. Positive and negative controls should be simultaneously run with unknown specimens, as there are no conclusive characteristics to suggest instability of the antibody.

Precautions

The product is for research use only. Do not use for diagnosis purpose. Ensure proper handling procedures are used with all reagents. Always wear laboratory coats, disposable gloves, and other appropriate laboratory equipment when handling reagents. Do not ingest reagents, and avoid contact with eyes and mucous membranes. Wash eyes with copious amounts of water if contact occurs.

References

1. **Lloyd RV**, et al. "p27kip1: a multifunctional cyclin-dependent kinase inhibitor with prognostic significance in human cancers." *Am J Pathol.* 1999 Feb;154(2):313-23.
2. **Migita T**, et al. "Low expression of p27(Kip1) is associated with tumor size and poor prognosis in patients with renal cell carcinoma." *Cancer.* 2002 Feb 15;94(4):973-9.
3. **Haitel A**, et al. "Expression of the cell cycle proteins p21, p27, and pRb in clear cell renal cell carcinoma and their prognostic significance." *Urology.* 2001 Sep;58(3):477-81.
4. **Esposito V**, et al. "Prognostic role of the cyclin-dependent kinase inhibitor p27 in non-small cell lung cancer." *Cancer Res.* 1997 Aug 15;57(16):3381-5.
5. **Tan P**, et al. "The cell cycle inhibitor p27 is an independent prognostic marker in small (T1a,b) invasive breast carcinomas." *Cancer Res.* 1997 Apr 1;57(7):1259-63.
6. **Khoo ML**, et al. "Overexpression of cyclin D1 and underexpression of p27 predict lymph node metastases in papillary thyroid carcinoma." *J Clin Endocrinol Metab.* 2002 Apr;87(4):1814-8.
7. **Huang LW**, et al. "Down-regulation of p27 is associated with malignant transformation and aggressive phenotype of cervical neoplasms." *Gynecol Oncol.* 2002 Jun;85(3):524-8.
8. **Ribal MJ**, et al. "Low p27 expression predicts biochemical relapse after radical prostatectomy in patients with clinically localised prostate cancer." *Anticancer Res.* 2003 Nov-Dec;23(6D):5101-6.
9. **Khoo ML**, et al. "Underexpression of p27/Kip in thyroid papillary microcarcinomas with gross metastatic disease." *Arch Otolaryngol Head Neck Surg.* 2002 Mar;128(3):253-7.
10. **Freedland SJ**, et al. "Predicting biochemical recurrence after radical prostatectomy for patients with organ-confined disease using p27 expression." *Urology.* 2003 Jun;61(6):1187-92.



Technical Support

Contact FemtoPath Technical Support at +886232338585 or email to femtopath@hongjing.com.tw for questions regarding this product.